

User's Guide

PowerAlert® External Battery Pack Utility

Supported Operating Systems

- Windows 7
- Windows 8
- Windows 10

Supported UPS Systems

- See **Appendix** on pages 6

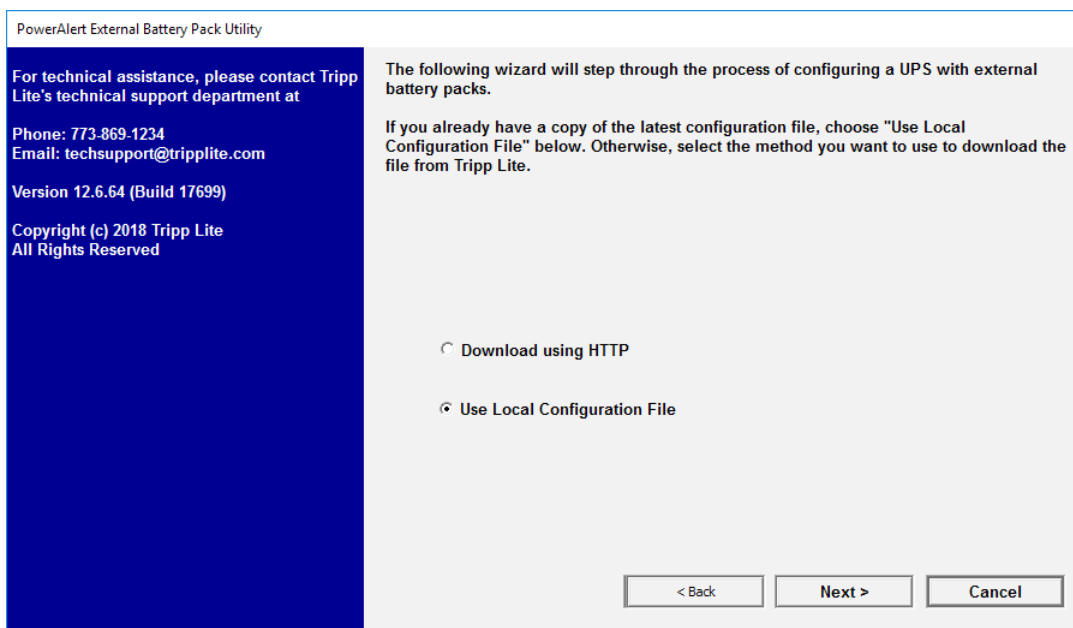


1111 W. 35th Street, Chicago, IL 60609 USA • www.tripplite.com/support

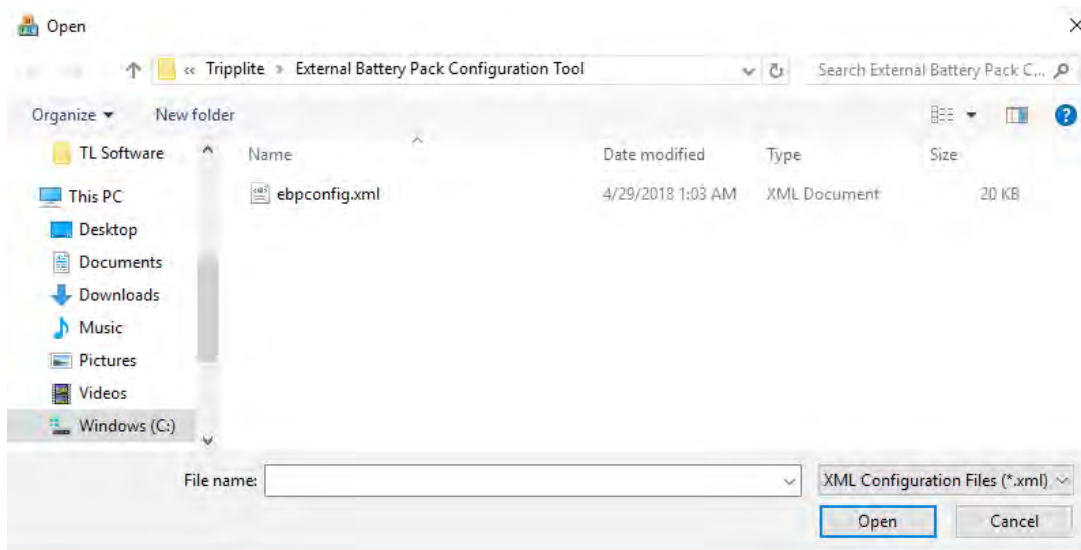
Copyright © 2018 Tripp Lite. All rights reserved.

To Add External Battery Packs

1. Connect a USB cable or serial cable between the UPS and your PC.
Note: If the UPS supports both USB and serial communication, connect only one communication cable between the UPS and PC.
Note: If the PowerAlert service is running, stop it.
2. Open the zipped file.
3. Run the **paebpu-12.6.64.xxxx-win_x86.exe** installation file.
4. To launch the application, go to directory: `C:\Program Files (x86)\TrippLite\PowerAlert External Battery Pack Utility` and double-click the **paebpu.exe** file.
5. Choose **Use Local Configuration File**, which uses the bundled file located in the *PowerAlert External Battery Pack Utility* directory. The **Download Using HTTP** option is inoperable at this time.

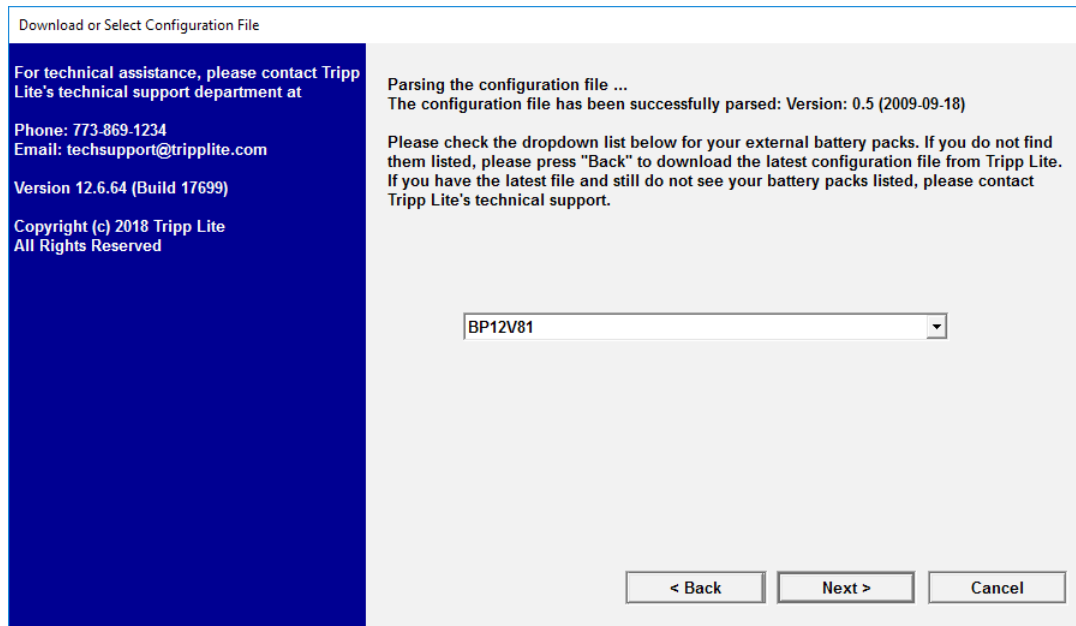


6. Click **Next**.
7. The utility will open a window to select the battery pack file locally.



To Add External Battery Packs

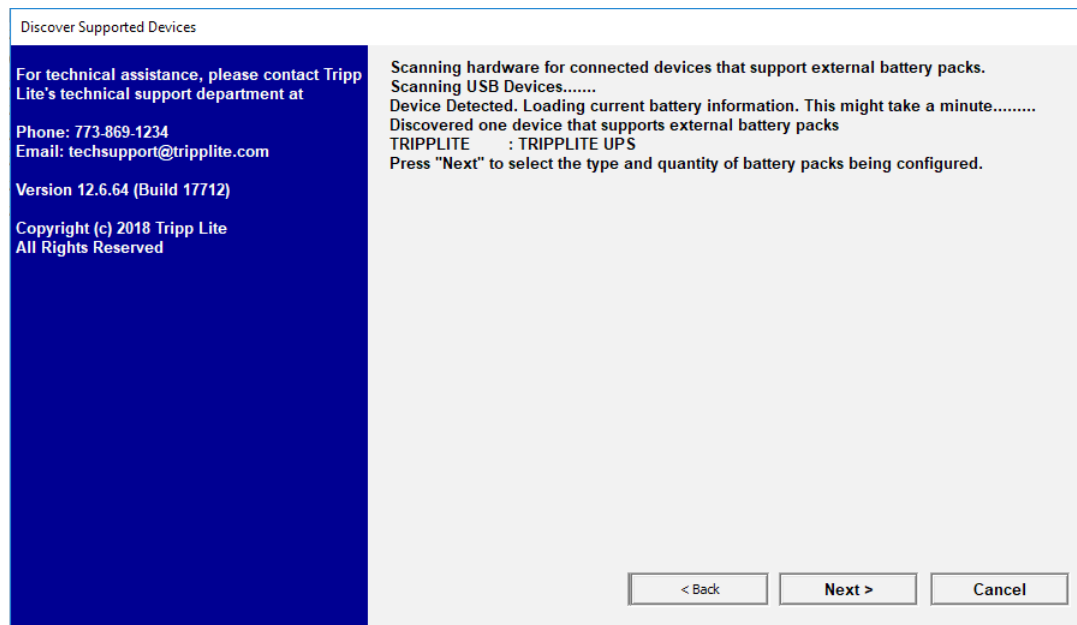
8. Before proceeding, see the list of available battery packs. If the battery pack is listed, click **Next**. If it is not listed, contact Tripp Lite's Technical Support department for assistance.



9. A discovery process to locate a supported UPS is started. If a supported UPS cannot be found, the application will indicate that after discovery is complete.

Note: If a UPS that is supported cannot be found, confirm the following:

- o The communication cable is properly connected between the UPS and PC
- o The UPS shows up as a battery-class device in Windows Device Manager (USB connection only)
- o PowerAlert software has been stopped (if it is installed)



10. After the discovery process is complete and the UPS is identified, click **Next**.

To Add External Battery Packs

- Select the quantity of battery and type of battery pack that is connected to the UPS. The application allows for the possible configuration of up to three (3) types of battery pack and their respective quantities attached to a single UPS.

Select External Battery Packs

For technical assistance, please contact Tripp Lite's technical support department at

Phone: 773-869-1234
Email: techsupport@tripplite.com

Version 12.06.0063

Current device Tripp Lite : TRIPP LITE SMART2200RMLN
Current number of internal batteries = 4; Current number of external batteries = 12

Select one or more battery packs and their associated quantities from the list below. You may then press "Next" to have the usage calculations performed and saved to the unit.

You may also press "Use Internal Batteries Only" to reset the device to use only the internal batteries, removing any existing external battery configuration.

- Click **Next**.

- The application will update the UPS with the new battery pack information and validate that the data written to the UPS is correct.

Updating External Battery Configuration

For technical assistance, please contact Tripp Lite's technical support department at

Phone: 773-869-1234
Email: techsupport@tripplite.com

Version 12.6.64 (Build 17712)

Copyright (c) 2018 Tripp Lite
All Rights Reserved

Calculating battery runtime based on the following battery packs and quantities:
(1) BP72V28RT-3U
Calculating new runtime estimates.
Device has 4 internal batteries of type 12v7.
Adding 24 external batteries of type 12v7
Runtime calculations completed.
Writing new runtime estimates to device. This might take a minute.
.....
Write to device complete.
Validating that the device has been updated. This might take a minute.
Device Detected. Loading current battery information. This might take a minute.....
Device update has been confirmed.

- To close the application, click **Done**.

Note: Runtimes reported by the UPS will have changed and be visible in software without requiring a restart of the UPS, software or network card.

To Reset the UPS to No External Battery Packs

1. Connect a USB cable or serial cable between the UPS and your PC.
Note: If the UPS supports both USB and serial communication, connect only one communication cable between the UPS and PC.
2. If the PowerAlert service is running, stop it.
3. Unzip the External Battery Pack Utility setup program from the zipped file.
4. Run the **paebpu-12.6.64.xxxx-win_x86.exe** installation file.
5. To launch the application, go to directory: *C:\Program Files (x86)\TrippLite\PowerAlert External Battery Pack Utility* and double-click the **paebpu.exe** file.
6. Use the bundled file located in the *PowerAlert External Battery Pack Utility* directory. The **Download Using HTTP** option is inoperable at this time.
7. Click **Next**.
8. The application will attempt to either download the battery pack list or open a window to select the included battery pack file.
9. To initiate a discovery of an appropriate UPS, click **Next**. If no UPS is discovered, the application will indicate that after discovery is complete.
10. Click **Next**.
11. Click **Use Internal Batteries Only**.
12. Click **Next**.
13. The application will update the UPS with the new battery pack information.
14. To close the application, click **Done**.

To Uninstall the PowerAlert External Battery Pack Utility

1. Go to **Add/Remove Programs** in Control Panel.
2. Select **PowerAlert External Battery Utility**.
3. Click **Remove** or **Uninstall**.

Appendix

UPS Systems That Are Compatible with the PowerAlert External Battery Pack Utility

| | | |
|------------------|------------------|-----------------|
| OMNIVS1500XL | OMNIVS1500XLTA | OMNIVSINT1500XL |
| SM1500RMXL2UTAA | SM2200RMDVTA | SM2200RMXL2UP |
| SM2200RMXL2UTAA | SM3000RM2UNTAA | SM3000RM2UTAA |
| SM3000RMXL2UTAA | SM3000RMXLNTAA | SM5000RT3UTAA |
| SMART1000RMXL2U | SMART1200XLHG | SMART1500CRMXL |
| SMART1500LCDXL | SMART1500RMXL2UA | SMART1500RMXLN |
| SMART1500XL | SMART2200CRMXL | SMART2200NET |
| SMART2200RMXL2U | SMART2200RMXLN | SMART2200VSXL |
| SMART2500XLHG | SMART2600RM2U | SMART3000CRMXL |
| SMART3000NET | SMART3000RM2U | SMART3000RM2UN |
| SMART3000RMXL2U | SMART3000RMXLN | SMART3000VS |
| SMART5000RT3U | SMART5000XFMXL | SMART750RMXL2U |
| SMART750XLA | SMARTINT3000VS | SMX1200XLHG |
| SMX1500XLRT2U | SMX2200XLRT2U | SMX3000XLRT2U |
| SMX3000XLRT2UA | SMX5000XLRT3U | SU10000RT3TFTAA |
| SU10000RT3U | SU10000RT3U2TF | SU10000RT3UG |
| SU10000RT3UTAA | SU1000RTXL2UA | SU1000RTXL2UN |
| SU1000RTXLCD2U | SU1000XLA | SU1000XLCD |
| SU100KX2 | SU10KRT3U | SU10KRT3UHV |
| SU12000RT4U | SU12000RT4UHW | SU120KX2 |
| SU12KRT4UHW | SU1500RTXL2UA | SU1500RTXL2UN |
| SU1500RTXLCD2U | SU1500RTXLCDN | SU1500RTXLCDTAA |
| SU1500XL | SU1500XLCD | SU16000RT4U |
| SU16000RT4UHW | SU16KRT | SU16KRT-1TF |
| SU16KRT-1TFTAA | SU16KRT8 | SU16KRTAA |
| SU16KRTG | SU16KRTHW | SU2200RTXL2UA |
| SU2200RTXL2UN | SU2200RTXLCD2U | SU2200RTXLCDN |
| SU2200RTXLCDTAA | SU2200XLA | SU2200XLCD |
| SU3000LCD2UHV | SU3000RTXL2U | SU3000RTXL3U |
| SU3000RTXL3UN | SU3000RTXLCD2U | SU3000RTXLCD3N |
| SU3000RTXLCD3U | SU3000RTXLCDTAA | SU3000RTXR3U |
| SU3000RTXR3UHW | SU3000XL | SU3000XLCD |
| SU5000RT4U | SU5000RT4UHV | SU5000RT4UHVTA |
| SU5000RT4UTF | SU5000RT4UTFTAA | SU6000RT4U |
| SU6000RT4UHV | SU6000RT4UHV G | SU6000RT4UHVHW |
| SU6000RT4UHVTA | SU6000RT4UTF | SU6000RT4UTFHW |
| SU6000RT4UTFTAA | SU750RTXL2U | SU750RTXL2UN |
| SU750RTXLCD2U | SU750XL | SU8000RT3U |
| SU8000RT3U1TF | SU8000RT3UG | SU8000RT3UHW |
| SU8000RT3UN50 | SU8000RT3UN50TF | SU8000RT3UTAA |
| SU8000RT3UTFTAA | SU8000RT4U | SUINT1000LCD2U |
| SUINT1000RTXL2UA | SUINT1000XLCD | SUINT1500LCD2U |
| SUINT2000XLCD | SUINT2200LCD2U | SUINT3000LCD2U |
| SUINT3000RTXL2U | SUINT3000XLCD | |



1111 W. 35th Street, Chicago, IL 60609 USA • www.tripplite.com/support